

NOTE : The above lifting heights and boom angles are based on a straight (unladen) boom, and allowance should be made for boom deflection obtained under laden conditions.

ON OUTRIGGERS

Unit : kg

Outriggers fully extended (6.3 m) 360 ° Rotation				
B \ A	9.1	15.6	22.1	28.6
3.0	30,000	19,200		
3.5	25,000	19,200	12,500	
4.0	23,000	19,200	12,500	8,000
4.5	21,200	18,100	12,500	8,000
5.0	19,400	17,000	12,500	8,000
5.5	17,900	15,800	12,000	8,000
6.0	16,300	14,700	11,500	8,000
6.5	15,100	13,800	11,000	8,000
7.0		12,900	10,500	8,000
8.0		10,700	9,400	7,100
9.0		8,400	8,400	6,400
10.0		6,850	7,500	5,800
11.0		5,600	6,400	5,350
12.0		4,750	5,400	4,900
13.0		4,050	4,600	4,550
14.0			4,000	4,200
15.0			3,450	3,850
16.0			3,000	3,450
17.0			2,650	3,050
18.0			2,350	2,650
19.0			2,050	2,400
20.0				2,100
22.0				1,700
24.0				1,300
26.0				1,000

Unit : kg

Outriggers fully extended (6.3 m) 360 ° Rotation												
C	28.6 m Boom + 7.2 m Jib						28.6 m Boom + 12.8 m Jib					
	5 ° offset		25 ° offset		45 ° offset		5 ° offset		25 ° offset		45 ° offset	
	B	W	B	W	B	W	B	W	B	W	B	W
80 °	5.8	3,000	7.9	2,000	9.6	1,400	7.6	2,000	11.4	1,000	14.2	650
75 °	9.2	3,000	11.1	2,000	12.6	1,400	11.7	2,000	15.1	1,000	17.5	650
70 °	12.5	2,900	14.2	2,000	15.5	1,400	15.3	1,650	18.5	1,000	20.6	650
65 °	15.4	2,350	16.9	1,750	18.2	1,400	18.7	1,400	21.7	900	23.4	650
60 °	18.0	1,950	19.5	1,500	20.6	1,350	21.8	1,200	24.7	850	26.0	650
55 °	20.6	1,600	21.9	1,350	22.8	1,200	24.7	1,000	27.4	750	28.3	620
50 °	22.9	1,350	24.2	1,200	24.9	1,100	27.5	900	29.8	700	30.5	600
45 °	25.0	1,050	26.1	1,000	26.7	1,000	29.9	750	32.0	650	32.3	550
40 °	27.0	850	27.9	800			32.2	650	33.8	550		
35 °	28.7	600	29.4	600			34.0	450	35.3	400		
30 °	30.2	450	30.7	450			35.7	350				
25 °	31.4	350	31.8	350								

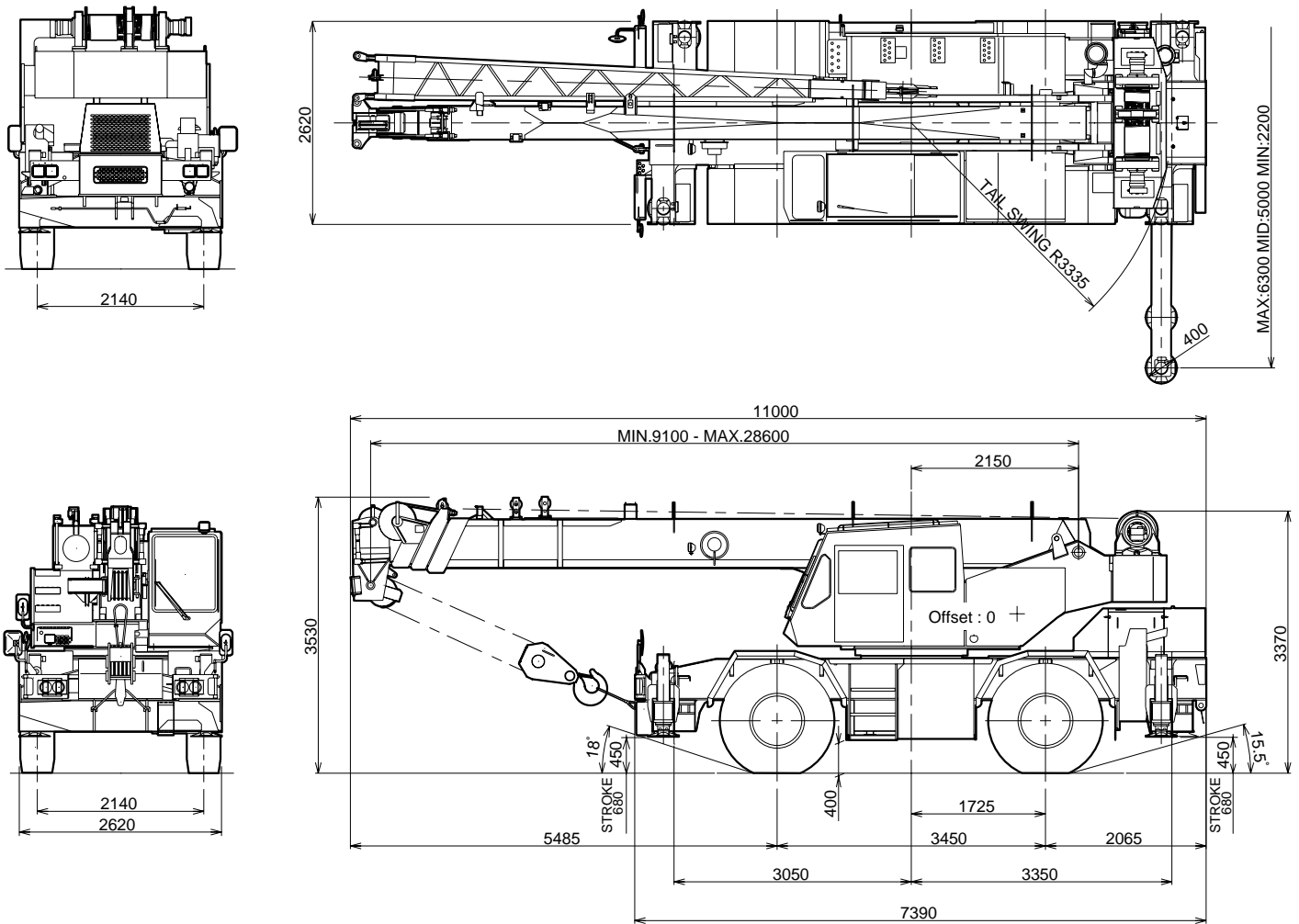
Unit : kg

Outriggers extended to middle (5.0 m) Over side				
B \ A	9.1	15.6	22.1	28.6
3.0	30,000	19,200		
3.5	25,000	19,200	12,500	
4.0	23,000	19,200	12,500	8,000
4.5	21,200	18,100	12,500	8,000
5.0	18,500	16,850	12,500	8,000
5.5	15,350	14,500	12,000	8,000
6.0	13,000	12,650	11,500	8,000
6.5	11,150	10,850	10,800	8,000
7.0		9,450	9,750	8,000
8.0		7,300	8,000	7,100
9.0		5,800	6,700	6,400
10.0		4,700	5,500	5,650
11.0		3,800	4,650	4,900
12.0		3,100	3,900	4,250
13.0		2,550	3,250	3,600
14.0			2,750	3,100
15.0			2,300	2,650
16.0			1,900	2,250
17.0			1,600	1,950
18.0			1,350	1,650
19.0			1,100	1,400
20.0				1,200
22.0				800

A : Boom length (m)
 B : Load radius (m)
 C : Boom angle
 W : Rated lifting capacity

DIMENSION

SPEC. SHEET No. TR-300E-3-00102/EX-24



Specifications are subject to change without notice.



TADANO LTD.

4-12, Kamezawa 2-chome,
Sumida-ku, Tokyo 130-0014, Japan

Tel : 81-(0)3-3621-7750

Fax : 81-(0)3-3621-7785

URL <http://www.tadano.co.jp/indexe.htm>

E-mail tdnihq@tadano.co.jp

Printed in Japan

TR-300EX-2003-10 -500-1